



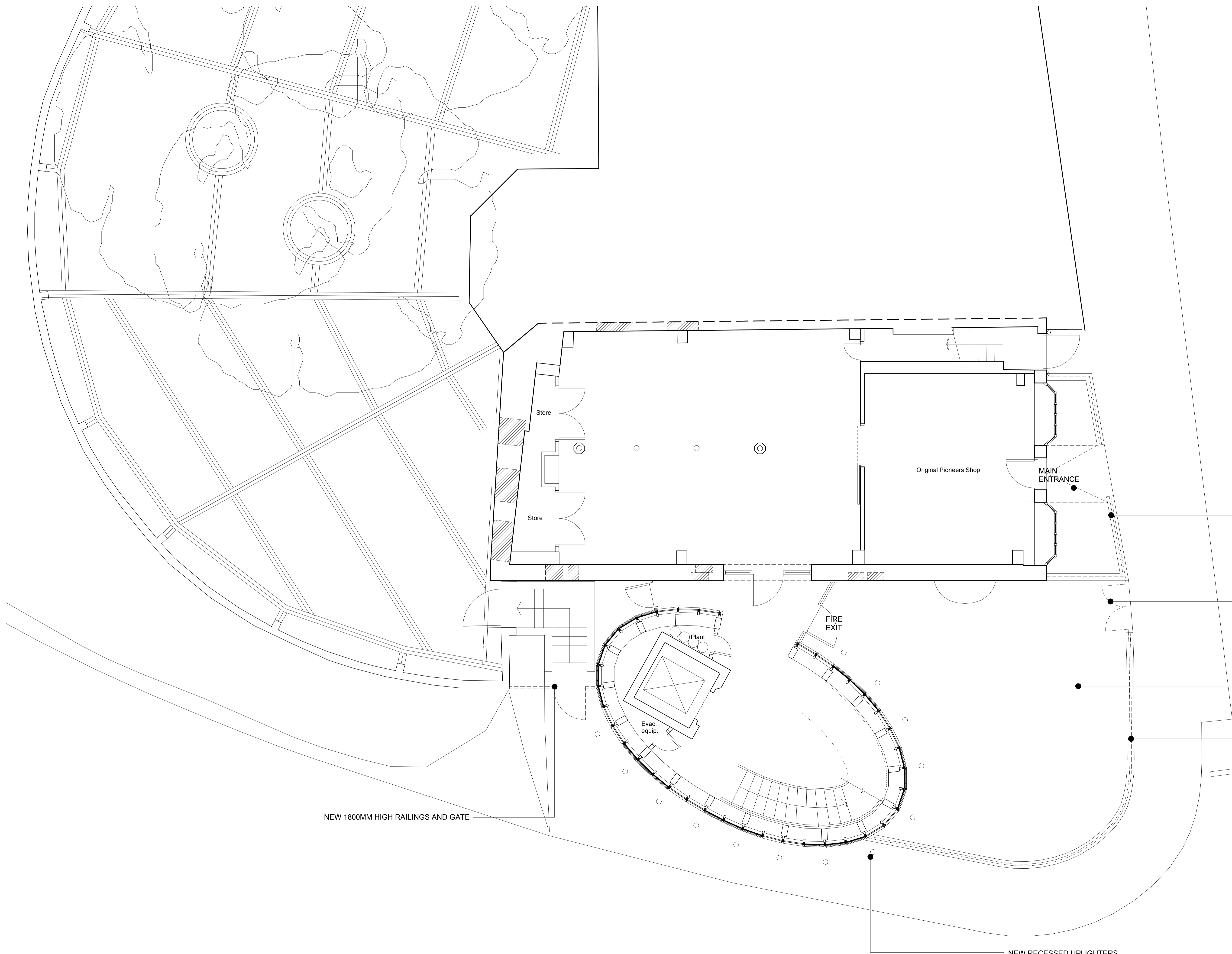
Rochdale Pioneers Museum  
13th August 2009 - Proposed Alternative Option



Rochdale Pioneers Museum  
13th August 2009 - Proposed Alternative Option



Rochdale Pioneers Museum  
13th August 2009 - Proposed Alternative Option



STEP TO FRONT DOOR MODIFIED TO ALLOW LEVEL ACCESS.

RAILINGS MOUNTED ON EXISTING STONE DWARF WALL

NEW GATES TO MATCH RAILINGS

EXISTING STONE FLAGS RELAI TO NEW LEVELS

NEW 1400MM HIGH RAILINGS ON MASONRY RETAINING WALL

NEW 1800MM HIGH RAILINGS AND GATE

NEW RECESSED UPLIGHTERS

Rev.	Date	Dr. By	Revisions
D	12/08/09	AW	LIFT TOWER MOVED WESTWARD AND LINK WIDENED FOLLOWING COMMENTS BY CONSERVATION OFFICER.
C	29/07/09	AW	LIFT TOWER RELOCATED TO HUNTERS LANE ELEVATION.
B	21/07/09	AW	DOOR REFS ADDED, STAIR AND LIFT REVISED.
A	09/06/08	AW	ELEVATION REDRAWN TO NEW STRUCTURAL DIMENSIONS. NOTES ADDED

**APPROVAL**

**Loop Systems Limited**  
 Add: Moor Rd, 17, 11 Cromwell Street, Manchester, M14 6LW  
 Tel: 0161 833 8813 Fax: 0161 833 8814  
 Email: info@loopystems.co.uk Web: www.loopystems.co.uk

Project ref:	Title:
06/111	Rochdale Pioneers Museum

Proposed Plan Ground Floor					
Scale:	Size:	Date:	Original By:	Drawing no.:	Rev.:
1:50	A1	19.03.09	ARW	110	D

Subject to all local authority & statutory approvals.  
 Do not scale from drawing. Work to figured dimensions.  
 Check all dimensions on site. In the event of any discrepancy refer query to architect.

GROUND FLOOR PLAN